

**// ALPHAMIX**

**Ensure ZERO De-lamination**



# // ALPHAMIX:

## Two components adhesive mixing & dispensing system

BST eltromat India is perfecting your performance by presenting ALPHAMIX "The State of the Art" two component adhesive mixing & dispensing system with various unique features for Solvent-less Lamination machines.

### Salient Features:

- Ensure **ZERO de-lamination** in all conditions
- Both **OH & NCO values** can be **set separately & displayed** all the time.
- **Coating GSM** is calculated & displayed
- **Roll / Job** reports
- **Innovative cleaning system** with auto-flush technology
- **Industry 4.0** ready system



Coating GSM



Calculate GSM &  
Temperature



Innovative  
Cleaning



Intuitive HMI



Job / Roll  
Reporting



Industry 4.0  
Ready

## // ALPHAMIX Versions:

The system comes in two variants.

// **Stand-alone Version:** Works independent of solvent-less machine and comes with a dedicated HMI display.

### Salient features:

- **Actual GSM Display:** The system takes the line-speed feedback from the solvent-less machine and shows the average coating thickness in real-time.
- **Tripping of Machine:** The system can trip the solvent-less machine in case of any problem in adhesive delivery including the adhesive sensor failure, ensuring Zero de-lamination. The operator only needs to ensure that the adhesive used is within its expiry date.

// **Integrated Version:** Works and communicates with the lamination machine. Both AlphaMix and the lamination machine can be controlled from a single HMI. Provided the machine automation is designed and implemented by **BST eltromat Automation**.

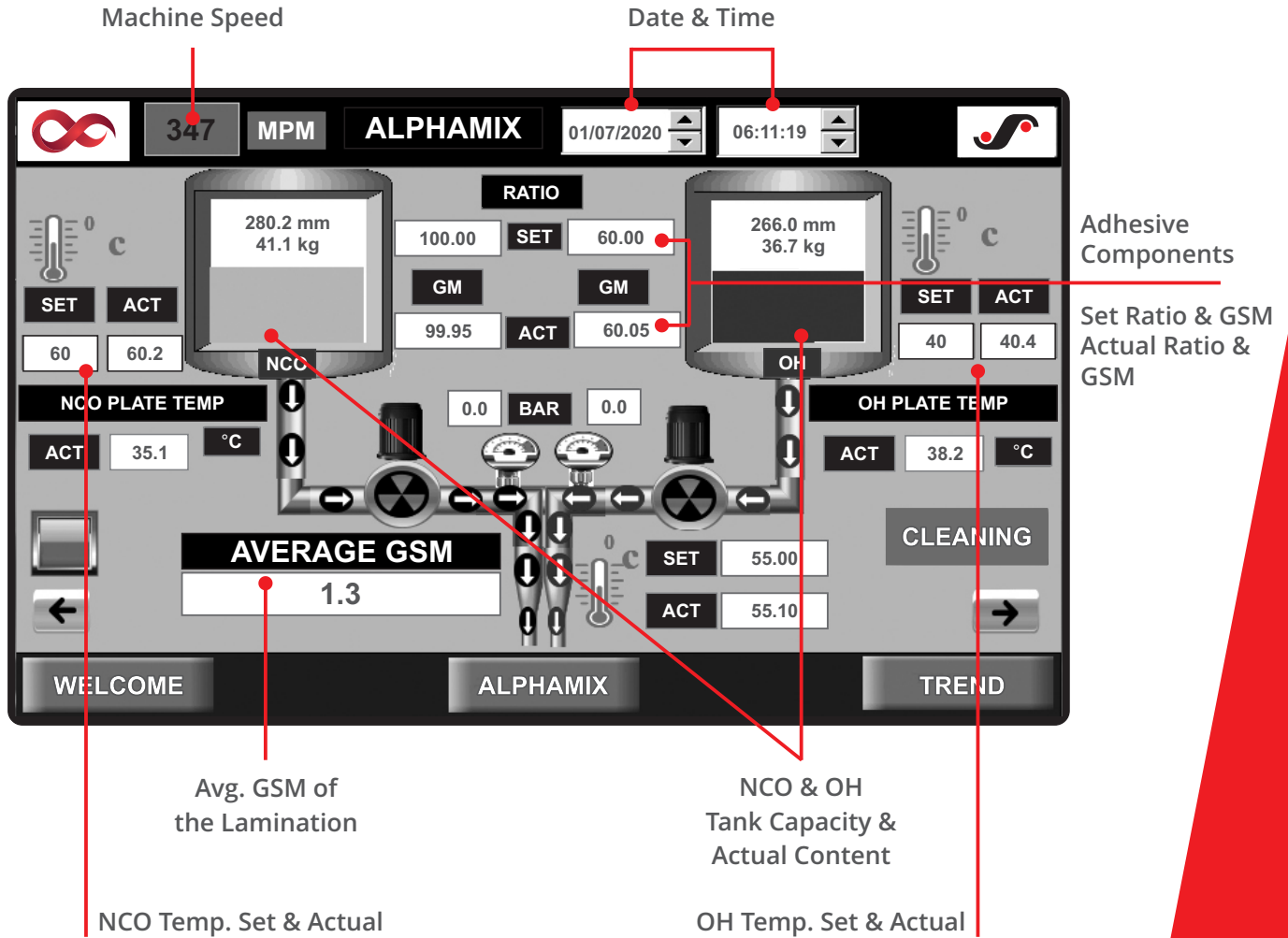
### Salient Features:

- Web tension remains constant during the ramp-up & ramp-down at constant speed.
- The diameter of the parent roll is automatically calculated after loading.
- The system displays and controls coating GSM in real-time.
- All tensions are automatically adopted once the information on type of material, its weight and thickness is fed in the HMI.
- In the probable event of de-lamination taking place due to proportion changing of the two component adhesives, the machine will trip automatically and advice the operator via an alarm. This ensures ZERO De-lamination under any circumstances.

### // Options:

- **Roll Reporting:** Send roll-wise production reports through email to designated recipient.
- **Job Report:** Sends job-wise production reports through email to designated recipient. Upto 10 job-reports can be saved in the system.
- **Auto filling attachment:** For continuous production, the system can be connected with the tank of adhesive. Through auto-filling attachment it fills the tank to optimum level.
- **Auto cleaning attachment:** Resin crystallizes during longer idle time result in damaging of the pump. It is therefore mandatory to flush the pump and hose which is quite cumbersome for an operator. An optional attachment plus software does the cleaning automatically and saves a lot of efforts of the operators.

## // Intuitive HMI Screen of AlphaMix:



## // Long-term success with great service

We have added new and innovative products into our portfolio. In doing this, we constantly remain focused on keeping you, our customer at the centre of everything we do. We are committed to offering you better solutions for your application.

Our team of specialist engineers shall provide you quick and prompt online-support in case of emergencies. No matter where in the world you use our technologies: We support you reliably with our comprehensive service.